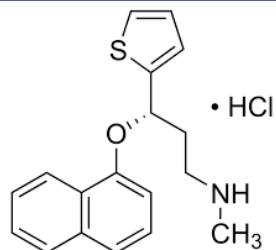


1 Dapoxetine HCl

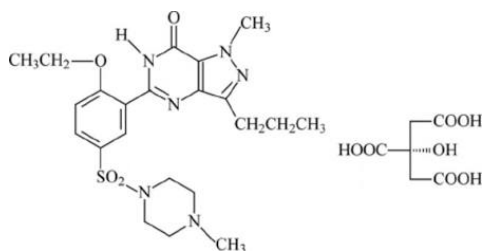


CAS No.	129938-20-1
Therapeutic Class	Erectile Dysfunction
Molecular Formula	C ₂₁ H ₂₃ NO·HCl
Molecular Weight	341.70 g/mol
Physical Form	White to off-white crystalline powder
Solubility	Freely soluble in water, Methanol and ethanol.
Packing	It is packed in fibre drums containing double plastic bags for bulk quantity and in tin and foil packaging for small quantity.
Storage conditions	Stored at 2–8°C in a cool, dry place, protected from light and moisture.

➤ Product Description

Dapoxetine hydrochloride is a selective serotonin reuptake inhibitor (SSRI) primarily used for the treatment of premature ejaculation in men. It is characterized by its rapid onset of action, typically within one to three hours after administration, and a short half-life, which allows for its use on an as-needed basis rather than as a daily medication. The compound is usually administered in oral form and is known for its efficacy in increasing the time to ejaculation and improving control over ejaculation. Dapoxetine hydrochloride is soluble in water and exhibits a moderate level of stability under standard conditions. Its pharmacological action is attributed to the inhibition of serotonin reuptake, which enhances serotonergic activity in the central nervous system. Common side effects may include nausea, dizziness, and headache, but it is generally well-tolerated. As with any medication, it is important for users to consult healthcare professionals for appropriate guidance and to discuss potential interactions with other medications.

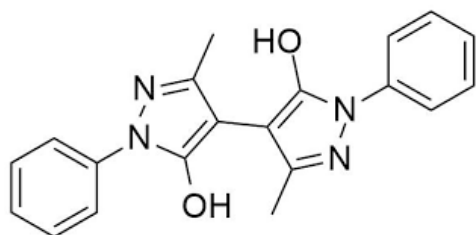
2 Sildenafil Citrate



CAS No.	171599-83-0
Therapeutic Class	Erectile Dysfunction
Molecular Formula	C ₂₁ H ₂₃ NO·HCl
Molecular Weight	666.70 g/mol
Physical Form	White to off-white crystalline powder
Solubility	Freely soluble in water and dimethyl sulfoxide (DMSO); slightly soluble in ethanol.
Packing	It is packed in fibre drums containing double plastic bags for bulk quantity and in glass vials for small quantity.
Storage conditions	Stored at 2–8°C in a cool, dry place, protected from light and moisture.

► Product Description

Sildenafil Citrate is the citrate salt of sildenafil, a potent and selective phosphodiesterase type 5 (PDE5) inhibitor. It is a well-established active pharmaceutical ingredient (API) widely used in the treatment of erectile dysfunction (ED) and pulmonary arterial hypertension (PAH). By inhibiting PDE5, Sildenafil enhances the effect of nitric oxide (NO), leading to increased levels of cyclic guanosine monophosphate (cGMP), smooth muscle relaxation, vasodilation, and improved blood flow. This mechanism makes it effective for treating erectile dysfunction and pulmonary arterial hypertension. Sildenafil at recommended doses has no effect in the absence of sexual stimulation. In several long-term and open-label studies, sildenafil remained effective for at least 0.5–4 years, with no evidence of tachyphylaxis during long-term use, and current evidence indicates that continued therapy is necessary as long as the condition persists.



CAS No.	171596-29-5
Therapeutic Class	Erectile Dysfunction
Molecular Formula	C ₂₂ H ₁₉ N ₃ O ₄
Molecular Weight	389.41 g/mol
Physical Form	White to off-white crystalline powder
Solubility	Slightly soluble in water; soluble in organic solvents such as methanol and ethanol.
Packing	It is packed in fibre drums containing double plastic bags for bulk quantity and in tin and foil packaging for small quantity.
Storage conditions	Keep at 2-8°C or even -20° C in a cool, dry place, away from moisture.

► Product Description

Tadalafil is a phosphodiesterase type 5 (PDE5) inhibitor used as an active pharmaceutical ingredient (API) in the treatment of erectile dysfunction (ED), benign prostatic hyperplasia (BPH), and pulmonary arterial hypertension (PAH). Tadalafil selectively inhibits phosphodiesterase type 5 (PDE5), an enzyme that degrades cyclic guanosine monophosphate (cGMP). Elevated cGMP levels promote smooth muscle relaxation in the corpus cavernosum and pulmonary vasculature, increasing blood flow to the penis and improved clinical outcomes in ED, BPH, and PAH. Compared to other PDE5 inhibitors, tadalafil has a longer half-life (up to 36 hours), providing extended therapeutic activity. Tadalafil is also approved to treat the lower urinary tract symptoms associated with an enlarged prostate.