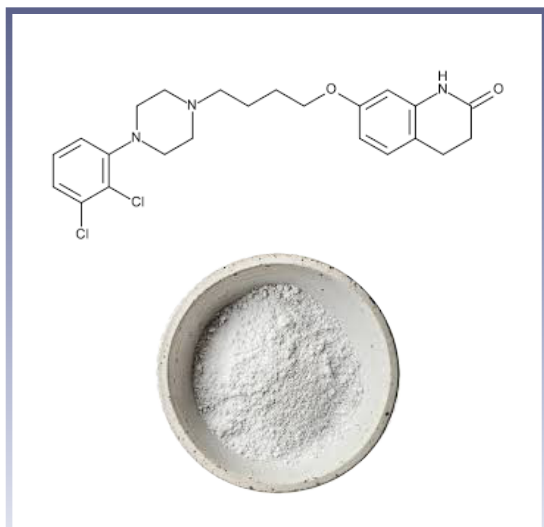


# 1 Aripiprazole

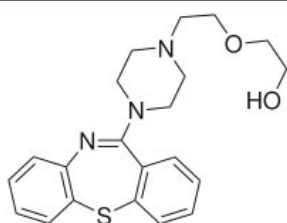


CAS No.	129722-12-9
Therapeutic Class	Anti Psychotic
Molecular Formula	$C_{23}H_{27}Cl_2N_3O_2$
Molecular Weight	448.39 g/mol
Physical Form	White to off-white solid powder.
Solubility	Freely soluble in methanol, ethanol and insoluble in water.
Packing	Fibre drum or HDPE drum with inner liner for bulk quantity. For small quantities, it may be packed in a glass bottle.
Storage conditions	It should be stored at $-20^{\circ}\text{C}$ to ensure its stability and quality.

## ➤ Product Description

Aripiprazole is an atypical antipsychotic agent belonging to the Quinolone class (Quinolones are a class of broad-spectrum antibiotics with excellent oral bioavailability and can be used to treat a wide variety of bacterial infections). It functions as a partial agonist at dopamine  $D_2$  (The  $D_2$  receptor is a G-protein-coupled receptor (GPCR) found mainly in the brain (striatum, substantia nigra, pituitary gland) and also in some peripheral tissues) and serotonin  $5\text{-HT}_1\text{A}$  receptors, (5-HT<sub>1A</sub> receptors refer to a subtype of serotonin (5-hydroxytryptamine, 5-HT) receptors, which are G protein-coupled receptors (GPCRs) widely distributed in the brain and some peripheral tissues) and as an antagonist at  $5\text{-HT}_2\text{A}$  receptors. This unique mechanism provides antipsychotic efficacy with a lower risk of certain side effects compared to traditional antipsychotics. Aripiprazole is a third-generation (or atypical) antipsychotic approved for treating various conditions: Schizophrenia, Acute manic and mixed episodes associated with bipolar I disorder, Irritability associated with autism spectrum disorder, Adjunctive treatment for major depressive disorder, and Tourette's disorder.

## 2 Quetiapine Fumarate



CAS No.	111974-69-7
Therapeutic Class	Anti Psychotic
Molecular Formula	$C_{21}H_{25}N_3O_2S \cdot C_4H_4O_4$
Molecular Weight	615.71 g/mol
Physical Form	White to off-white crystalline powder.
Solubility	Slightly soluble in water; freely soluble in methanol; sparingly soluble in ethanol.
Packing	Packed in fibre drums or HDPE containers with inner double-layer polyethylene bags, customized for bulk and small quantities.
Storage conditions	Store in a cool, dry place. Protect from light and moisture.

### ► Product Description

Quetiapine Fumarate is indicated for the treatment of schizophrenia, depressive episodes associated with bipolar disorder, acute manic episodes associated with bipolar I disorder (as either monotherapy or adjunct therapy to lithium or divalproex), and maintenance treatment of bipolar I disorder (as adjunct therapy to lithium or divalproex). It is sometimes used off-label, often as an augmentation agent, to treat such conditions as obsessive-compulsive disorder, post-traumatic stress disorder, restless legs syndrome, autism, alcoholism Tourette syndrome and has been used by physicians as a sedative for those with sleep disorders or anxiety disorders. The antipsychotic effect of Quetiapine Fumarate is thought by some to be mediated through antagonist activity at dopamine and serotonin receptors. Specifically the  $D_1$  and  $D_2$  dopamine, the  $\alpha_1$  adrenoreceptor and  $\alpha_2$  adrenoreceptor, and 5-HT $_1A$  and 5-HT $_2$  serotonin receptor subtypes are antagonized. Quetiapine also has an antagonistic effect on the histamine  $H_1$  receptor.